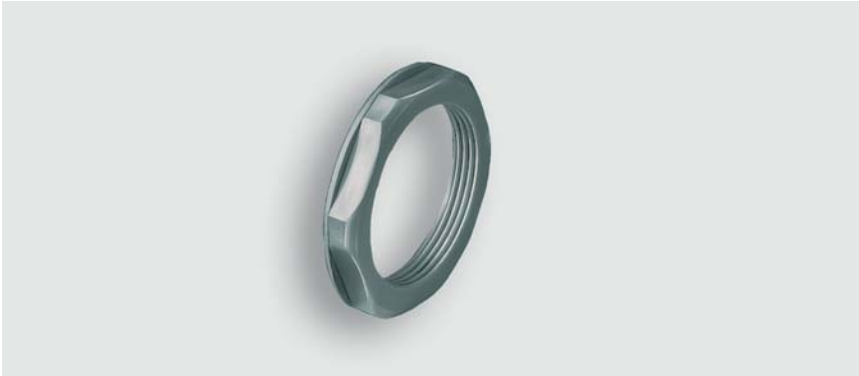


Technical data sheet - Plastic accessory GK metric

Cable fittings and accessories



Identification	Type	GK M 25x1,5
	Part-No.	600393
Use/Area of application		
Properties	<ul style="list-style-type: none">• – metric –• Counter nut, hexagonal, with metric thread according to DIN 46320	
Technical data		
Material	Polyamide 6 GF 30	
Colour	grey	
Anti-kink device	without anti-kink device	
weight approx.	0.28 kg/100 piece	
Design		
G	M 25x1.5	
S	6.0 mm	
SW	32 mm	
General		
PU	100 piece	

08.12.2012 – Subject to technical modification

Part-No. 600393

USA: LUTZE INC.

13330 South Ridge Drive • Charlotte, NC 28273, USA
Tel. +1 (704) 504-0222 • Fax +1 (704) 504-0223
www.lutze.com • info@lutze.com

United Kingdom: LÜTZE Ltd.

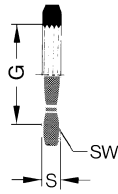
Unit 3, Sandy Hill Park
Sandy Way, Amington • GB-Tamworth, Staffs B77 4DU
Tel. +44 (0)1827 31333-0 • Fax +44 (0)1827 31333-2
www.lutze.com • sales.gb@lutze.co.uk



SYSTEMATIC TECHNOLOGY

Technical data sheet - Plastic accessory GK metric

Dimensions



08.12.2012 – Subject to technical modification

Part-No. 600393

USA: LUTZE INC.

13330 South Ridge Drive • Charlotte, NC 28273, USA
Tel. +1 (704) 504-0222 • Fax +1 (704) 504-0223
www.lutze.com • info@lutze.com

United Kingdom: LÜTZE Ltd.

Unit 3, Sandy Hill Park
Sandy Way, Amington • GB-Tamworth, Staffs B77 4DU
Tel. +44 (0)1827 31333-0 • Fax +44 (0)1827 31333-2
www.lutze.com • sales.gb@lutze.co.uk



SYSTEMATIC TECHNOLOGY