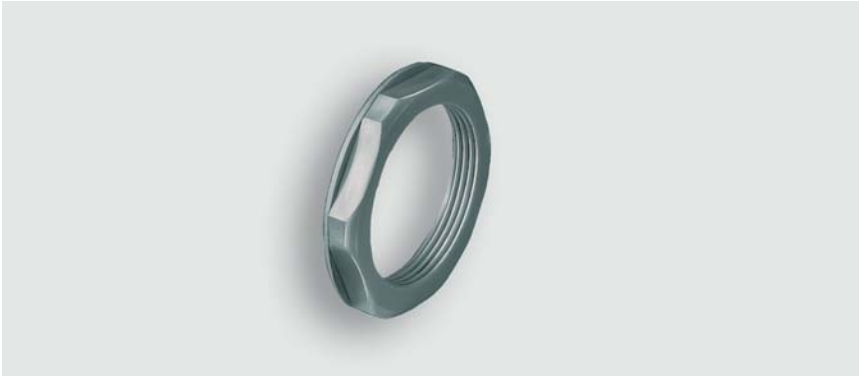


# Technical data sheet - Plastic accessory GK metric

Cable fittings and accessories



<b>Identification</b>	Type	GK M 16x1,5
	Part-No.	600391
<b>Use/Area of application</b>		
Properties	<ul style="list-style-type: none"><li>• – <b>metric</b> –</li><li>• Counter nut, hexagonal, with metric thread according to DIN 46320</li></ul>	
<b>Technical data</b>		
Material	Polyamide 6 GF 30	
Colour	grey	
Anti-kink device	without anti-kink device	
weight approx.	0.16 kg/100 piece	
<b>Design</b>		
G	M 16x1.5	
S	5.0 mm	
SW	22 mm	
<b>General</b>		
PU	100 piece	

08.12.2012 – Subject to technical modification

Part-No. 600391

USA: LUTZE INC.

13330 South Ridge Drive • Charlotte, NC 28273, USA  
Tel. +1 (704) 504-0222 • Fax +1 (704) 504-0223  
www.lutze.com • info@lutze.com

United Kingdom: LÜTZE Ltd.

Unit 3, Sandy Hill Park  
Sandy Way, Amington • GB-Tamworth, Staffs B77 4DU  
Tel. +44 (0)1827 31333-0 • Fax +44 (0)1827 31333-2  
www.lutze.com • sales.gb@lutze.co.uk

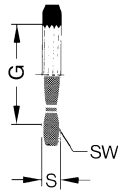


SYSTEMATIC TECHNOLOGY

# Technical data sheet - Plastic accessory GK metric

---

## Dimensions



08.12.2012 – Subject to technical modification

Part-No. 600391

USA: LUTZE INC.

13330 South Ridge Drive • Charlotte, NC 28273, USA  
Tel. +1 (704) 504-0222 • Fax +1 (704) 504-0223  
www.lutze.com • info@lutze.com

United Kingdom: LÜTZE Ltd.

Unit 3, Sandy Hill Park  
Sandy Way, Amington • GB-Tamworth, Staffs B77 4DU  
Tel. +44 (0)1827 31333-0 • Fax +44 (0)1827 31333-2  
www.lutze.com • sales.gb@lutze.co.uk